



Sairom
CERA INTERNATIONAL

*ideas
and its
history*

Discover A New Way Of Combining Textures In...

index

- 01. GLOSSY SERIES
 - 29. GLOSSY POSTER SERIES
 - 33. MATT SERIES
 - 66. MATT HI-DEPTH SERIES
 - 69. MATT POSTER SERIES
 - 73. GLOSSY HI-DEPTH ELEVATION SERIES
 - 79. MATT HI-DEPTH ELEVATION SERIES
-



*Fusion
of tradition
and technologies*

| Glossy finish

The Glossy series recreates unlimited creativity in a modern, contemporary language. Incorporating different textures, carefully chosen to create 'interaction'. The glossiness of the tile also has the added benefit of imparting a richer, more dramatic color presence to your walls. you can make the best of the best by tiling your walls with high sheen finishes in creative ways.





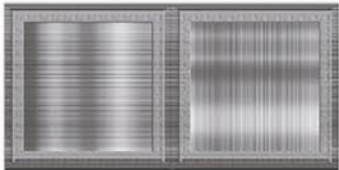
2024 - L GREY



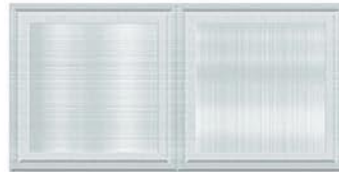
2024 - HL-1 GREY



2024 - HL-2 GREY



2024 - D GREY



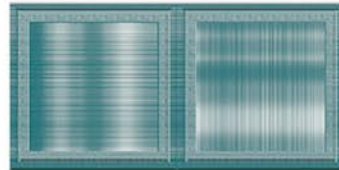
2024 - L AQUA



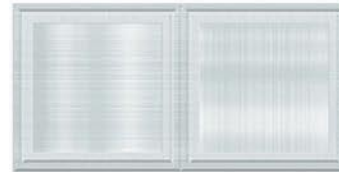
2024 - HL-1 AQUA



2024 - HL-2 AQUA



2024 - D AQUA



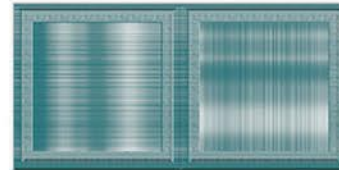
2024 - L AQUA



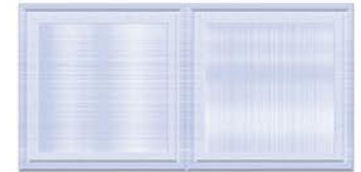
2024 - HL-3 AQUA



2024 - HL-4 AQUA



2024 - D AQUA



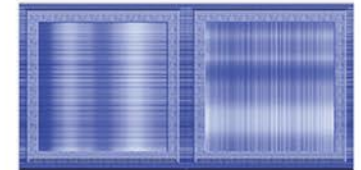
2024 - L BLUE



2024 - HL-1 BLUE



2024 - HL-2 BLUE



2024 - D BLUE



2014 - L [®]



2014 - HL-1



2014 - HL-2



2014 - D [®]



2038 - L



2038 - HL-1 A



2038 - HL-1 B



2038 - D



2045 - L [®]



2045 - HL-1



2045 - HL-2



2045 - D [®]



2045 - L [®]



2045 - HL-3



2045 - HL-4



2045 - D [®]



2047 - L



2047 - HL-1



2047 - HL-2



2047 - D



2047 - L



2047 - HL-4



2047 - HL-6



2047 - D



2075 - L BROWN



2075 - HL-1 BROWN



2075 - HL-2 BROWN



2075 - D BROWN



2075 - L GREY



2075 - HL-1 GREY



2075 - HL-1 GREY



2075 - D GREY



2060 - L BLACK



2060 - HL-1 BLACK



2060 - HL-2 BLACK



2060 - D BLACK



2060 - L BLACK



2060 - HL-3 BLACK



2060 - D BLACK



2060 - L BROWN



2060 - HL-3 BROWN



2060 - D BROWN



2060 - L BROWN



2060 - HL-1 BROWN



2060 - HL-2 BROWN



2060 - D BROWN



2068 - L



2068 - HL-1 A



2068 - HL-1 B



2068 - D



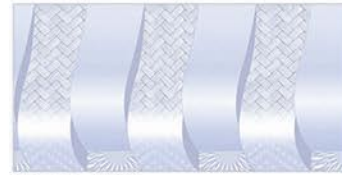
2099 - L



2099 - HL-1



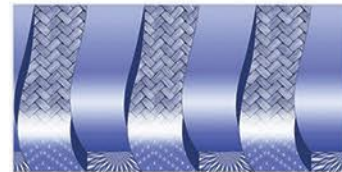
2099 - D



2100 - L BLUE



2100 - HL-1 BLUE



2100 - D BLUE



2100 - L BROWN



2100 - HL1 BROWN



2100 - D BROWN



2105 - L



2105 - HL-1



2105 - D



2106 - L



2106 - HL-1



2106 - HL-2



2106 - D



2107 - L



2107 - HL-1



2107 - HL-2



2107 - D



24104 - L



24104 - HL-1



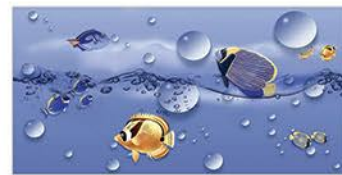
24104 - HL-2



24104 - D



4014 - L



4014 - HL-4



4014 - HL-1



4014 - HL-5



4014 - HL-2



4014 - D

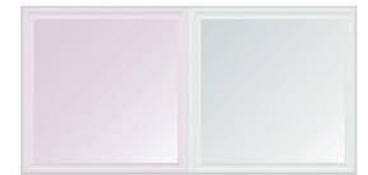


4014 - HL-3



4038 - L

®



4038 - L

®



4038 - HL-1



4038 - HL-3



4038 - HL-2



4038 - HL-4



4038 - D

®



4038 - D

®



24112 · HL-1



24112 · HL-2



24112 · HL-3



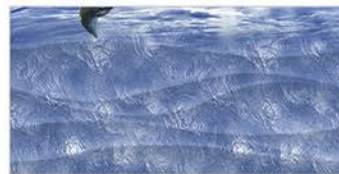
24112 · D



24137 · L



24137 · HL-1 A



24137 · HL-1 B



24137 · D



24137 · L



24137 · HL-2



24137 · D



24172 · L



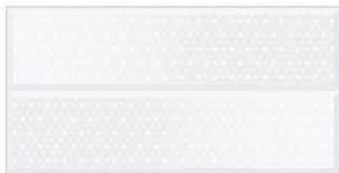
24172 · HL-1



24172 · HL-4



24172 · D



24175 · L



24175 · HL-1



24175 · HL-2



24175 · D



24185 · L



24185 · HL-1



24185 · HL-2



24185 · D



24189 · L



24189 · HL-1



24189 · HL-2



24189 · D



24189 · L



24189 · HL-3

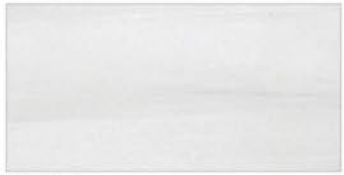


24189 · HL-4



24189 · D





24195 - L ®



24195 - HL-1



24195 - HL-3



24195 - D ®



24208 - L



24208 - HL-1



24208 - HL-2



24208 - L



24220 - L ®



24220 - HL-2



24220 - HL-3



24220 - D ®



24222 - L



24222 - HL-1



24222 - HL-2



24222 - D





24224 · L ®



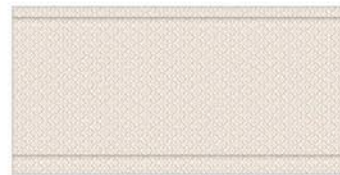
24224 · HL-1



24224 · HL-2



24224 · D ®



24229 · L



24229 · HL-2



24229 · HL-4



24229 · D



24233 · L



24233 · HL-1



24233 · HL-2



24233 · D



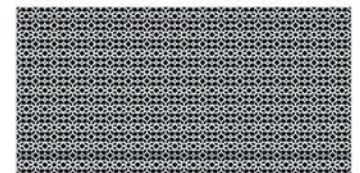
24234 · L



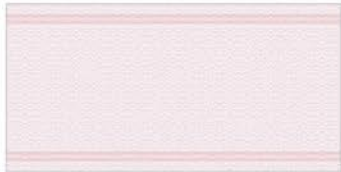
24234 · HL-1



24234 · HL-2



24234 · D



24235 · L



24235 · HL-1



24235 · HL-2



24235 · D



24237 · L1

®



24237 · HL-1 A



24237 · HL-1 B



24237 · HL-3



24237 · L2

®



24237 · HL-2 A



24237 · HL-2 B



24237 · L3

®



24249 · L



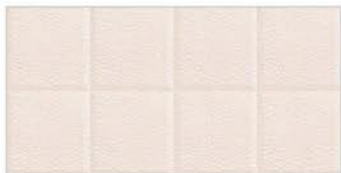
24249 · HL-1A



24249 · HL-1B



24249 · D



24257 · L



24257 · HL-1



24257 · HL-10



24257 · D



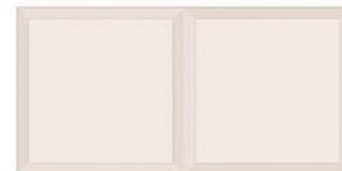
24260 · L



24260 · HL-1



24260 · HL-2



24260 · L



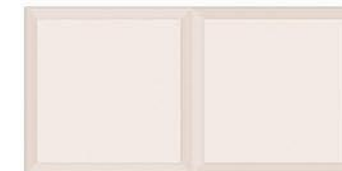
24260 · L



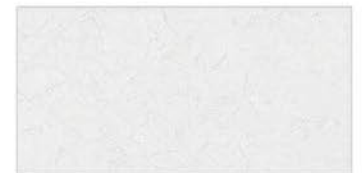
24260 · HL-3



24260 · HL-4



24260 · L



24261 · L

®



24261 · HL-1



24261 · HL3



24261 · D

®



24264 · L



24264 · HL-2



24264 · HL-6



24264 · D



24265 · L



24265 · HL-1



24265 · HL-2



24265 · D



24265 · L



24265 · HL-5



24265 · HL-6



24265 · D



24282 · L



24282 · HL-1



24282 · HL-2



24282 · D



24266 - L ®



24266 - L ®



24266 - HL-1



24266 - HL-3



24266 - HL-2



24266 - HL-5



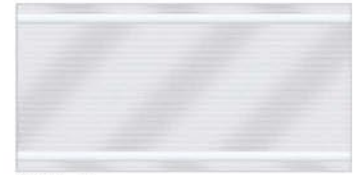
24266 - D ®



24266 - D ®



24271 - L



24271 - L



24271 - HL-1



24271 - HL-3



24271 - HL-2



24271 - HL-4



24271 - L



24271 - L





24280 · L



24280 · HL-1



24280 · HL-3



24280 · D



24283 · L



24283 · HL-1



24283 · HL-2



24283 · D



24285 · L



24285 · HL-1



24285 · HL-2



24285 · L



24286 · L



24286 · HL-2



24286 · HL-3



24286 · D



24287 · L



24287 · HL-1



24287 · HL-2



24287 · L



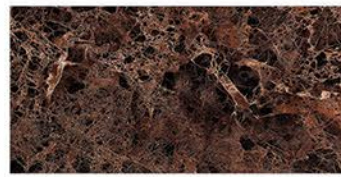
24289 · L



24289 · HL-1



24289 · HL-2



24289 · D



24291 · L



24291 · HL-2



24291 · HL-4



24291 · D



24293 · L



24293 · HL-1



24293 · HL-2



24293 · D





24293 - L ®



24293 - HL-3



24293 - D ®



24295 - L ®



24295 - HL1



24295 - HL3



24295 - L ®



24297 - L ®



24297 - HL1



24297 - HL-2



24297 - D ®



24299 - L ®



24299 - HL-1



24299 - HL-2



24299 - D



24303 - L



24303 - L



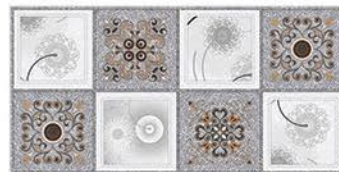
24303 - HL-1



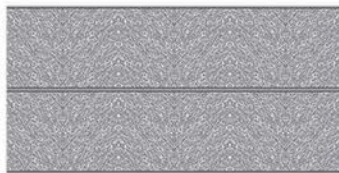
24303 - HL-3



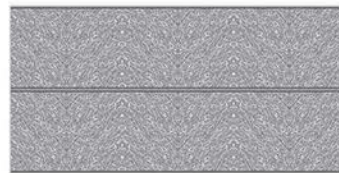
24303 - HL-2



24303 - HL-4



24303 - D



24303 - D



24304 - L



24304 - L



24304 - HL-1



24304 - HL-2



24304 - HL-3 POSTER



(4 Pcs.)





24308 · L



24308 · HL-1



24308 · HL-2



24308 · D



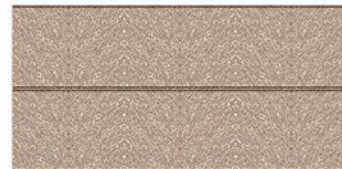
24308 · L



24308 · HL-3



24308 · HL-6



24308 · D



24310 · L



24310 · HL1



24310 · HL2



24310 · HL4



24312 · L



24312 · HL1



24312 · HL-2



24312 · L



24316 · L



24316 · HL1



24316 · HL3



24316 · D



24316 · L



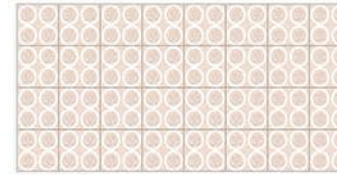
24316 · HL4



24316 · HL5



24316 · D



24317 · L



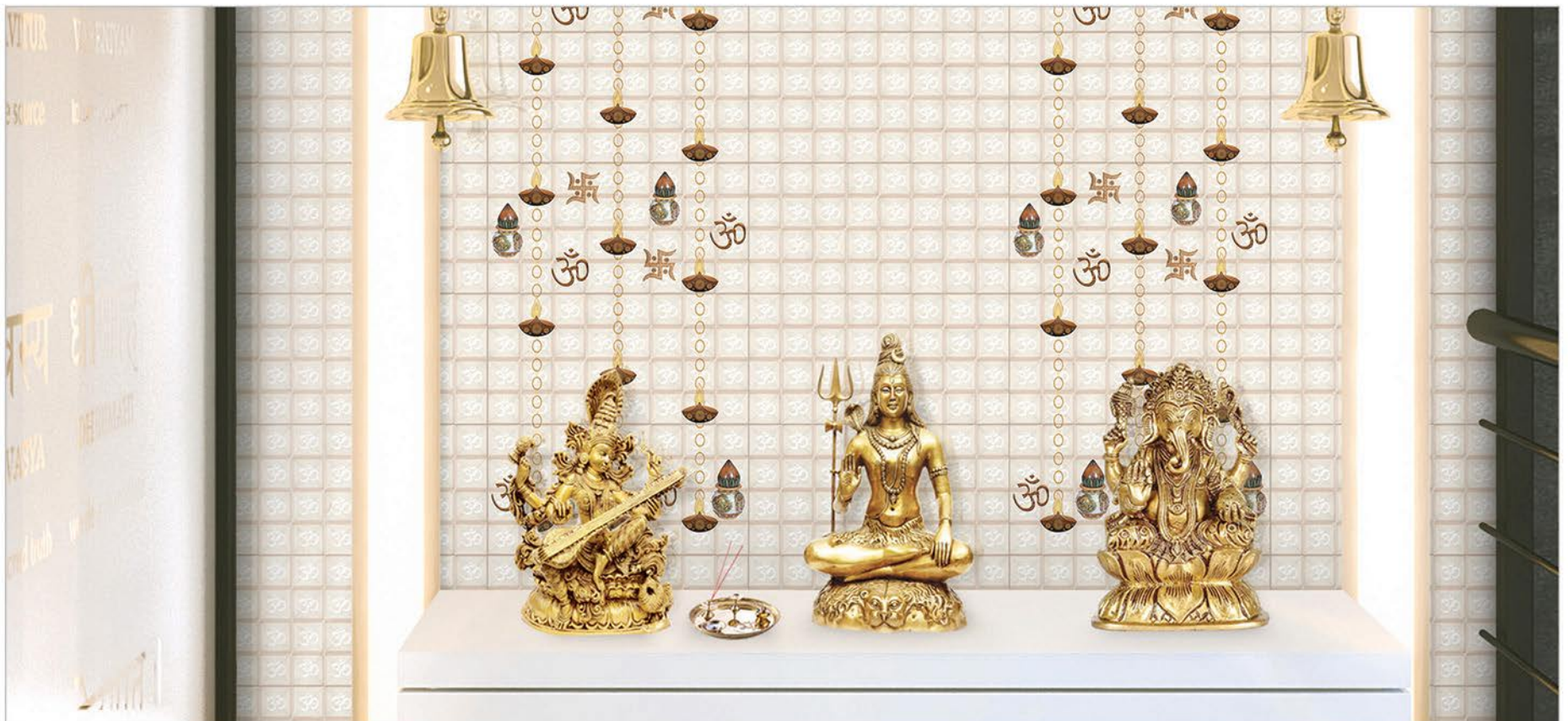
24317 · HL1



24317 · HL2



24317 · HL3





24313 · L



24313 · HL-1A



24313 · HL-1B



24313 · D



24320 · L



24320 · HL1



24320 · HL2



24320 · D



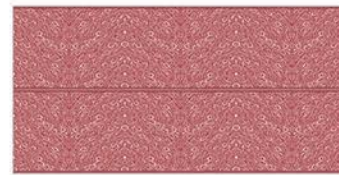
24323 · L



24323 · HL-1



24323 · HL-2



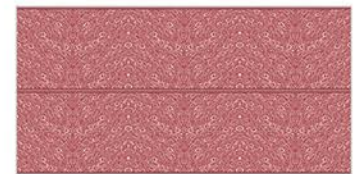
24323 · D



24323 · L



24323 · HL-3



24323 · D



24326 · L



24326 · HL-1



24326 · HL2



24326 · HL-3



24327 · L



24327 · HL-1



24327 · D



24327 · L



24327 · HL-3A



24327 · HL-3B



24327 · D



24329 · L



24329 · HL-1



24329 · HL-2



24329 · L



24336 - L



24336 - HL-1



24336 - HL-2



24336 - D



24337 - L



24337 - HL-1



24337 - HL-2



24337 - D



24339 - L



24339 - HL-1



24339 - HL-2



24339 - D



24344 - L



24344 - HL-1



24344 - HL-2



24344 - D





24342 - L ®



24342 - L ®



24345 - L



24345 - L



24342 - HL-2A



24342 - HL-3



24345 - HL-1



24345 - HL-3



24342 - HL-2B



24342 - D ®



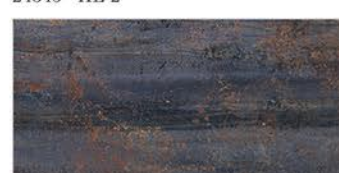
24345 - HL-2



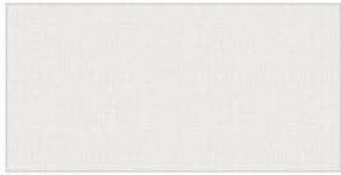
24345 - D



24342 - D ®



24345 - D



24350 - L



24350 - HL-1A



24350 - HL-1B



24350 - D



24351 - L



24351 - HL-1A



24351 - HL-1B



24351 - D



24352 - L



24352 - HL-1A



24352 - HL-1B



24352 - D



24353 - L



24353 - HL-1A



24353 - HL-1B



24353 - D





24357 · L



24357 · HL-1A



24357 · HL-1B



24357 · HL-1C



24359 · L



24359 · HL-1



24359 · HL-2



24359 · D



24359 · L



24359 · HL-3



24359 · D



24360 · L



24360 · HL-1



24360 · HL-2



24360 · D



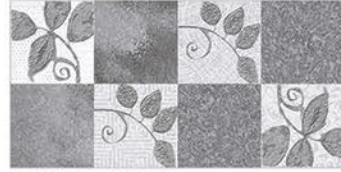
24362 - L GREY ®



24362 - L GREY ®



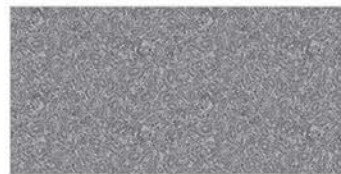
24362 - HL-1 GREY



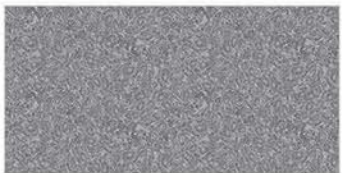
24362 - HL-3 GREY



24362 - HL-2 GREY



24362 - D GREY ®



24362 - D GREY ®



24362 - L BEIGE



24362 - L BEIGE



24362 - HL-1 BEIGE



24362 - HL-2A BEIGE



24362 - D BEIGE



24362 - HL-2B BEIGE



24362 - D BEIGE





24361 · L



24361 · HL-1



24361 · HL-3



24361 · D



24361 · L



24361 · HL-2A



24361 · HL-2B



24361 · D



24364 · L [®]



24364 · HL-1



24364 · HL-2



24364 · D [®]



24365 · L [®]



24365 · HL-1



24365 · HL-2



24365 · D [®]



24367 - L



24367 - HL-1A



24367 - HL-1B



24367 - HL-2



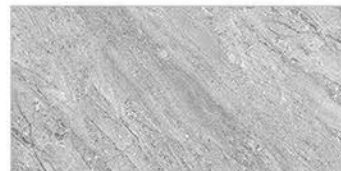
24368 - L



24368 - HL-1A



24368 - HL-1B



24368 - D



24368 - L



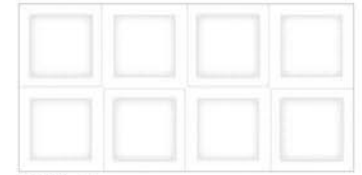
24368 - HL-2A



24368 - HL-2B



24368 - D



24406 - L



24406 - HL-1



24406 - HL-2



24406 - HL-3



24409 - L



24409 - HL-1



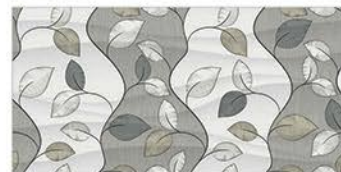
24409 - HL-2



24409 - D



24421 - L



24421 - HL-1



24421 - HL-2



24421 - D



24434 - L



24434 - HL-2



24434 - D



24434 - D



24434 - HL-1 POSTER



(4 Pcs.)





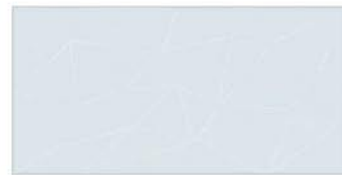
24437 · L



24437 · HL-1



24437 · D



24445 · L



24445 · HL-1



24445 · HL-2



24445 · D



24506 · L [®]



24506 · HL-3



24506 · HL-4



24506 · D [®]



24521 · L [®]



24521 · HL-1



24521 · HL-6



24521 · D [®]



24534 · L ®



24534 · HL-1



24534 · HL-2



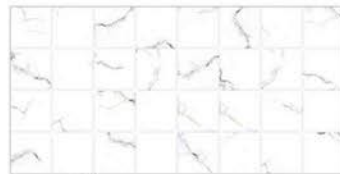
24534 · HL-3



24534 · L ®



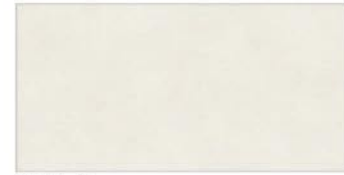
24534 · HL-4



24534 · HL-5



24534 · L ®



24535 · L



24535 · HL-1



24535 · HL-3



24535 · D2





24536 · L ®



24536 · HL-1



24536 · HL-2



24536 · D ®



24537 · L



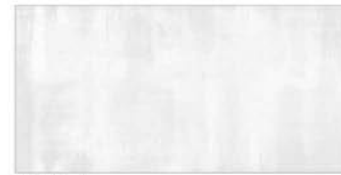
24537 · HL-1



24537 · HL-2



24537 · D



24538 · L



24538 · HL-1



24538 · HL-2



24538 · D



2067 - L ®



2067 - HL-1A ®



2067 - HL-1B ®



2067 - HL-1C ®



2067 - D



2067 - HL-2 POSTER

(12 Pcs.)



24236 - L



24236 - HL-2



24236 - HL-3



24236 - D



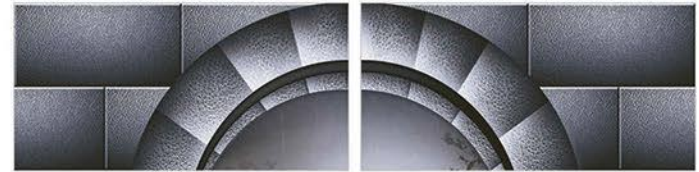
24236 - HL-1 POSTER

(4 Pcs.)



24268 - D

24268 - D

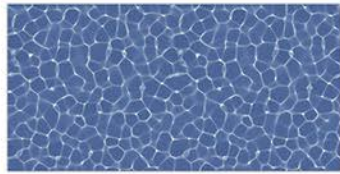


24268 - HL-1 POSTER

(8 Pcs.)



24276 · L



24276 · D



24276 · HL-1 POSTER (4 Pcs.)



24314 · L



24314 · HL-2



24314 · D



24314 · HL-1 POSTER (4 Pcs.)



24314 · L GREY



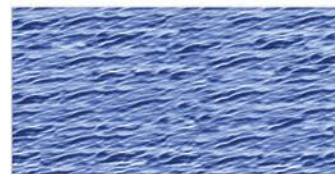
24314 · D GREY



24314 · HL-1 POSTER GREY (4 Pcs.)



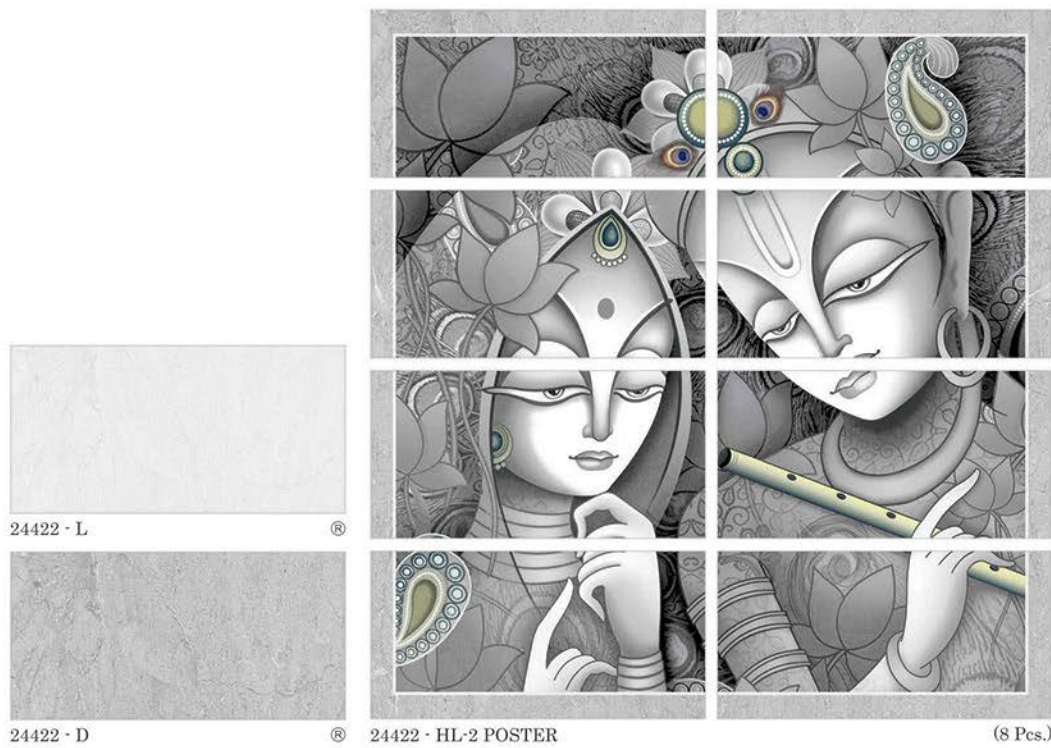
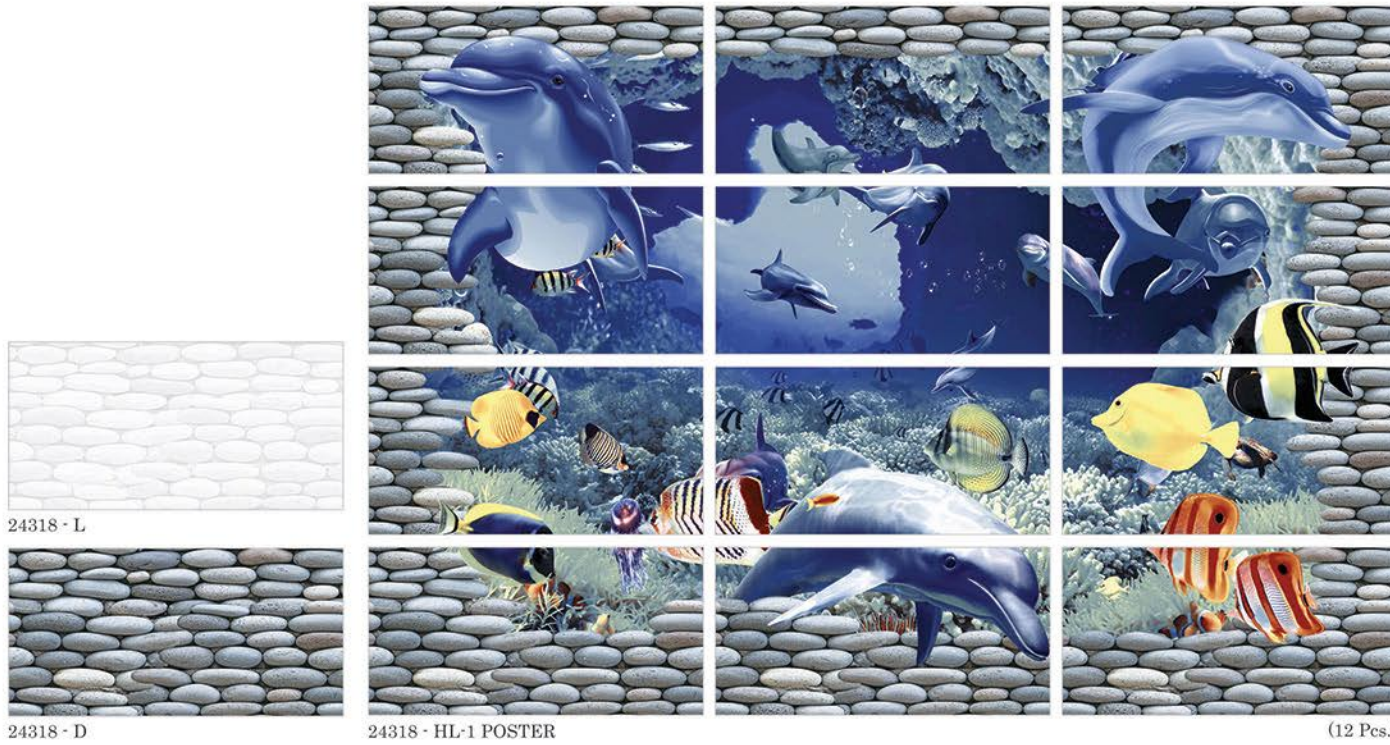
24319 · L



24319 · D



24319 · HL-1 POSTER (8 Pcs.)





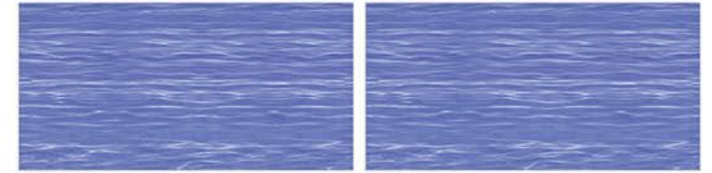
24369 - L



24369 - D

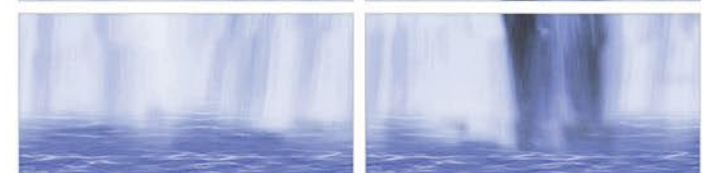
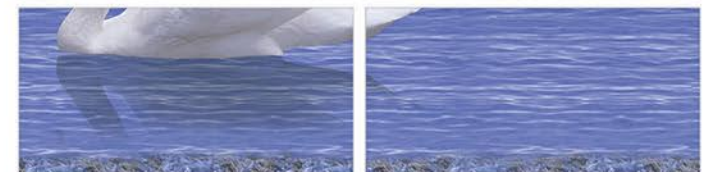
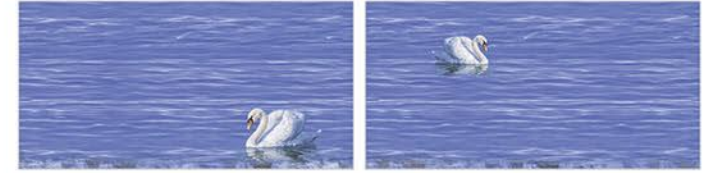
24369 - HL-1 POSTER

(12 Pes.)



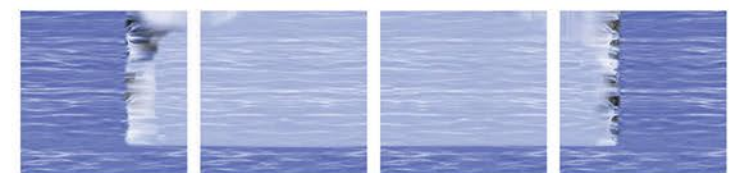
24356 - D

24356 - D



24356 - HL-1 POSTER

(12 Pes.)



24356 - POSTER (FLOOR)

(8 Pes.)

Simplicity,
The ultimate
sophistication



Sairam

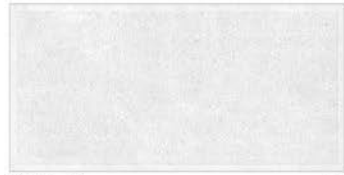
| Matt finish

A material inspired by concrete, shaped by the fusion of tradition and avant-garde technologies, with a great natural look and matt surface available in essential neutral shades. The low sheen makes them easier to maintain. A tile to enrich residential environments or commercial spaces with a contemporary, design and elegant look.





26111 - L ®



26111 - L ®



26112 - L ®



26112 - L ®



26111 - HL-1



26111 - HL-3



26112 - HL-1



26112 - HL-3



26111 - HL-2



26111 - D ®



26112 - HL-2



26112 - D ®



26111 - D ®



26112 - D ®





26118 · L ®



26118 · L ®



26118 · HL-1A ®



26118 · HL-2



26118 · HL-1B ®



26118 · HL-3



26118 · D ®



26118 · D ®



26119 · L



26119 · L



26119 · HL-1



26119 · HL-3



26119 · HL-2



26119 · D



26119 · D



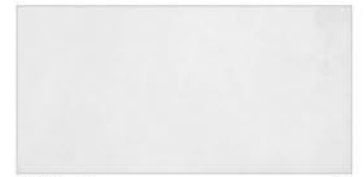
26120 - L ®



26120 - L ®



26121 - L



26123 - L ®



26120 - HL-1



26120 - HL3



26121 - HL1



26123 - HL-1



26120 - HL-2



26120 - D ®



26121 - HL2



26123 - HL-2



26120 - D ®



26121 - D



26123 - D ®





26124 - L



26124 - HL-1



26124 - D



26124 - L



26124 - HL-2



26124 - HL-2



26124 - D



26125 - L



26125 - HL-1



26125 - D



26125 - L



26125 - HL-2A



26125 - HL-2B



26125 - D



26126 - L



26126 - HL-1



26126 - HL-2



26126 - D



26153 - L



26153 - HL-1



26153 - HL-2



26153 - D



26171 - L



26171 - HL-1



26171 - HL-2



26171 - D



26183 - L



26183 - HL1



26183 - HL2



26183 - D





26173 · L ®



26173 · HL1



26173 · D ®



26174 · L ®



26174 · HL-1



26174 · HL-2



26174 · D ®



26175 · L ®



26175 · HL-1



26175 · HL-2



26175 · D ®



26182 · L ®



26182 · HL1



26182 · HL2



26182 · D ®



26184 - L



26184 - HL-1



26185 - L



26185 - HL-1



26184 - D1



26184 - HL-2



26185 - D



26185 - HL-2





26188 · L ®



26188 · HL-1



26192 · L ®



26192 · HL-1



26188 · D ®



26188 · HL-2



26192 · D ®



26192 · HL-2



26197 - L ®



26197 - HL-1



26197 - HL-2



26197 - D ®



26209 - L



26209 - HL-1



26209 - D



26214 - L ®



26214 - HL-1



26214 - HL-2



26214 - D ®



26215 - L ®



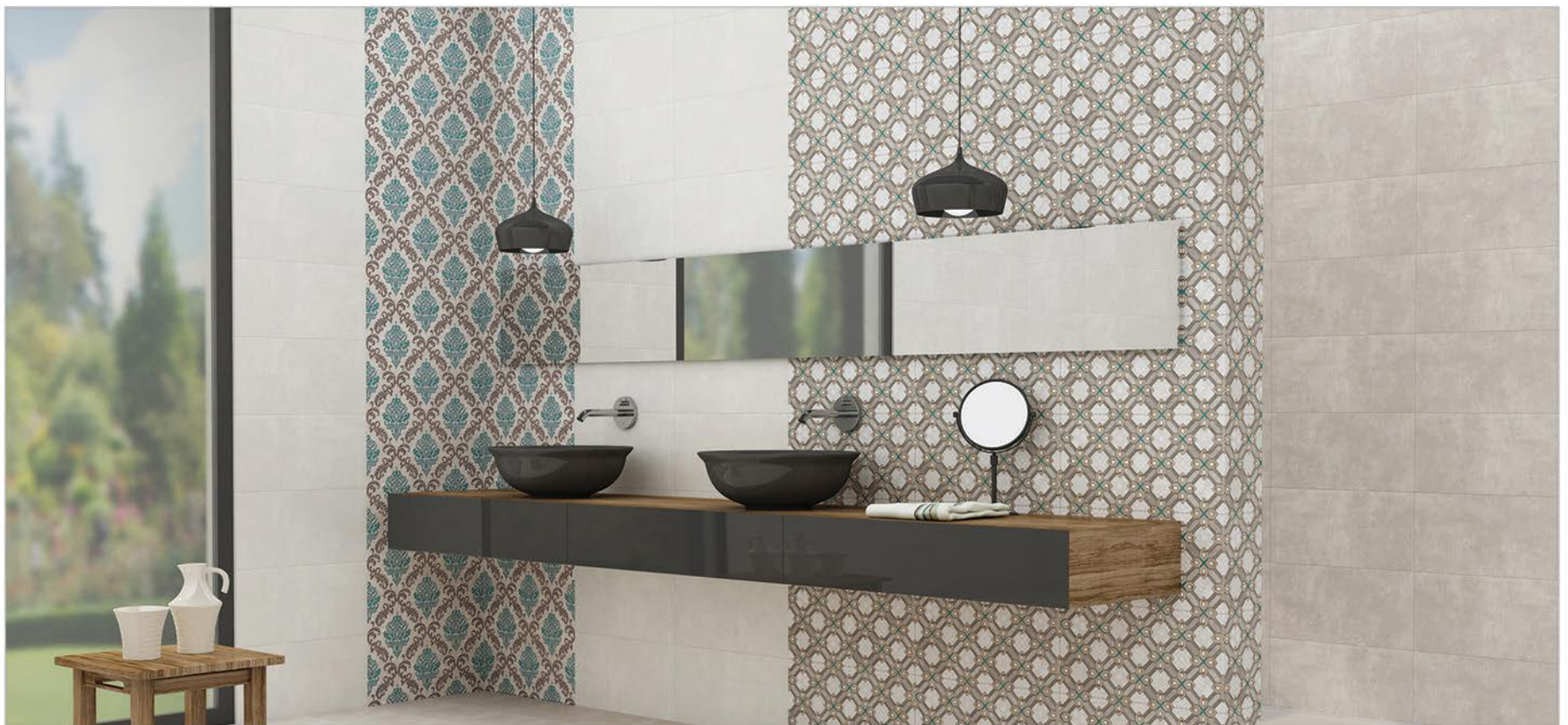
26215 - HL-1



26215 - HL-2



26215 - D ®





26220 - L ®



26220 - HL-1A



26220 - HL-1B



26220 - D ®



26220 - L ®



26220 - HL-2



26220 - HL-3



26220 - D ®



26224 - L



26224 - HL-1



26224 - HL-2



26224 - D



26224 - L



26224 - HL-3



26224 - HL-4



26224 - D



26225 - L



26225 - HL-1



26225 - HL-16



26225 - D



26229 - L



26229 - HL-1



26229 - D



26229 - L



26229 - HL-2A



26229 - HL-2B



26229 - D



26248 - L



26248 - HL1



26248 - HL2



26248 - D





26246 - L



26246 - L



26246 - HL-1A



26246 - HL-2



26246 - HL-1B



26246 - D



26246 - D



26253 - L



26253 - L



26253 - HL-1



26253 - HL-3



26253 - HL-2



26253 - D



26253 - D



26261 · L



26261 · L



26261 · L



26261 · L



26261 · HL-A1



26261 · HL-A3



26261 · HL-B1



26261 · HL-B3



26261 · HL-A2



26261 · HL-A4



26261 · HL-B2



26261 · HL-B4



26261 · L



26261 · L



26261 · L



26261 · L





26260 - L ®



26260 - HL1



26260 - HL2



26260 - L ®



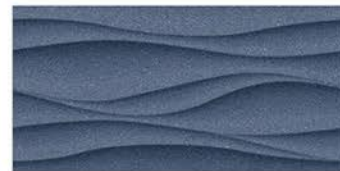
26262 - L



26262 - HL-1



26262 - HL-2



26262 - D



26263 - L



26263 - HL-1



26263 - HL-2



26263 - D



26264 - L ®



26264 - HL3



26264 - L ®



SM WHITE - 131



SM WHITE - 131



SM WHITE - 131



26272 - L



26268 - HL-1



26268 - HL-3



26264 - HL-5A



26272 - HL-1



26268 - HL-2



26268 - HL-4



26264 - HL-5B



26272 - HL-3



SM WHITE - 131



SM WHITE - 131



SM WHITE - 131



26272 - D





SM WHITE 172



26276 - DECOR-A



26276 - DECOR-B



26276 - DECOR-C



26401 - L



26401 - HL-2



26401 - HL-3



26401 - HL-4



26401 - HL-5



26401 - HL-6



26401 - HL-7



26401 - HL-8



26401 - L



26401 - HL-9



26401 - HL-10



26401 - D



26415 · L ®



26415 · HL-1



26415 · HL-3



26415 · D ®



26418 · L ®



26418 · HL-1



26418 · D ®



26427 · L ®



26427 · HL-1



26427 · HL-2



26427 · D ®



26438 · L ®



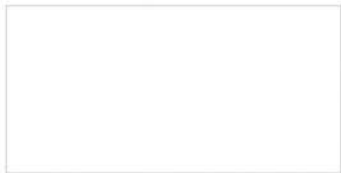
26438 · HL-1



26438 · HL-2



26438 · D ®



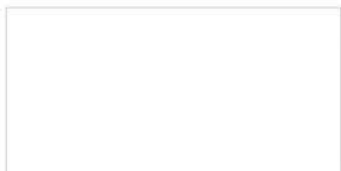
26434 · WHITE



26434 · HL-1



26434 · HL-2



26434 · L WHITE



26434 · HL-3A ®



26434 · HL-3B ®



26434 · HL-3C ®



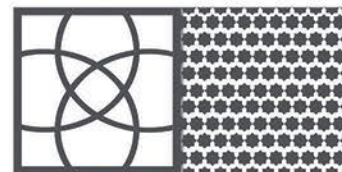
26434 · HL-3D ®



26434 · HL-4A ®



26434 · HL-4B ®



26434 · HL-4C ®



26434 · HL-4D ®



26436 · L



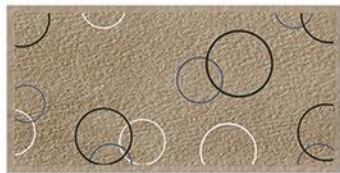
26436 · HL-1



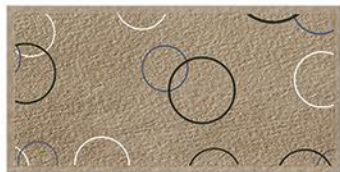
26436 · HL-2



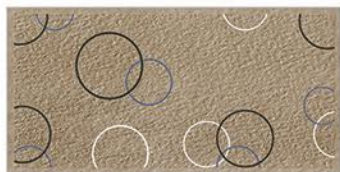
26436 · D



26436 · HL3 ®



26436 · HL3 ®



26436 · HL3 ®



26436 · D



26440 · L ®



26440 · HL-1



26440 · HL-3



26440 · D ®



26448 · L



26448 · HL-1



26448 · HL-2



26448 · D



26452 · L



26452 · HL-1



26452 · HL-2



26452 · D



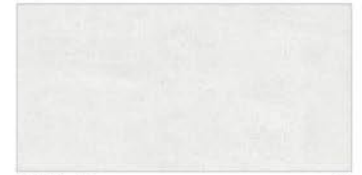
26468 - L



26468 - L



26471 - L



26474 - L



26468 - HL-1A



26468 - HL-2



26471 - HL-1



26474 - HL-1



26468 - HL-1B



26468 - D



26471 - HL-2



26474 - HL-2



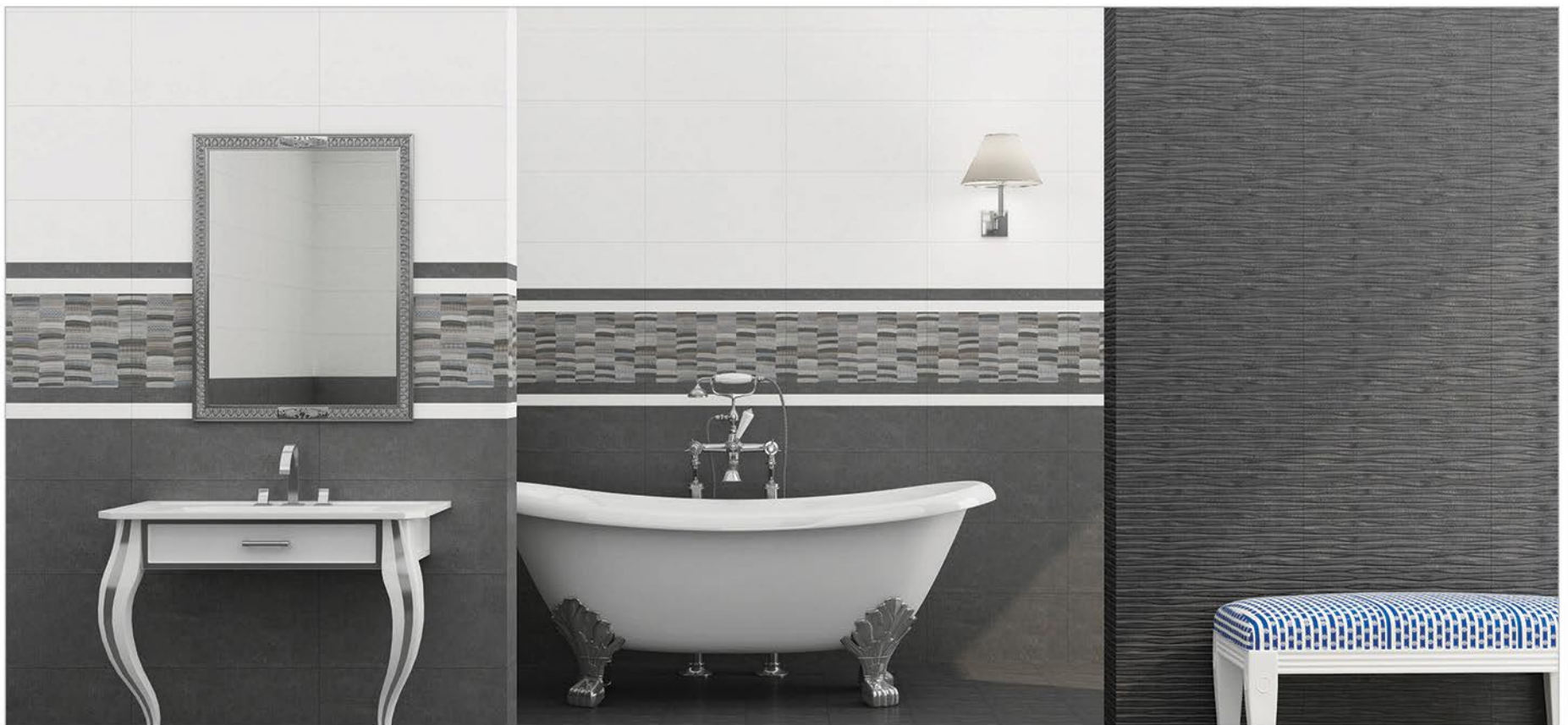
26468 - D



26471 - D



26474 - D





26473 - L



26473 - HL-1



26473 - HL-2



26473 - D



26475 - L



26475 - HL-1



26475 - HL-2



26475 - D



26476 - L



26476 - HL-1



26476 - HL-2



26476 - D



26477 - L



26477 - HL-1



26477 - HL-2



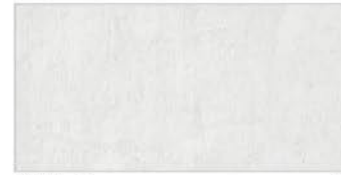
26477 - D



26478 - L ®



26478 - HL-1



26479 - L ®



26479 - HL-1



26478 - D ®



26478 - HL-2 ®



26479 - D ®



26479 - HL-2





26489 · L ®



26489 · HL-1



26481 · L ®



26481 · HL-1



26489 · D ®



26489 · HL-2



26481 · D ®



26481 · HL-2



26480 - L ®



26480 - HL-1



26483 - L ®



26483 - HL-1



26480 - D ®



26480 - HL-2



26483 - D ®



26483 - HL-2





26484 · L ®



26484 · HL-1



26487 · L ®



26487 · HL-1



26484 · D ®



26484 · HL-2



26487 · D ®



26487 · HL-2



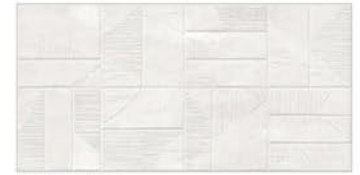
26488 - L ®



26488 - HL-1



26491 - L ®



26491 - HL-1



26488 - D ®



26488 - HL-2



26491 - D ®



26491 - HL-2



26488 - HL-3





26492 - L ®



26492 - HL-1



26493 - L ®



26493 - HL-1



26492 - D ®



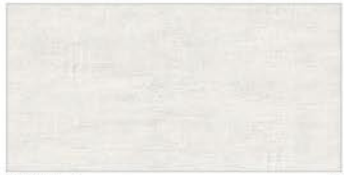
26492 - HL-2



26493 - D ®



26493 - HL-2



26494 - L ®



26494 - HL-1



26495 - L ®



26495 - HL-1



26494 - D ®



26494 - HL-2



26495 - D ®



26495 - HL-2





26497 - L ®



26497 - HL-1



26502 - L



26502 - HL-1



26497 - D ®



26497 - HL-2



26502 - D



26502 - HL-2



26496 - L



26496 - L



26499 - L



26500 - L



26496 - HL-1A



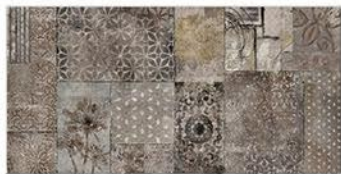
26496 - HL-2A



26499 - HL-1



26500 - HL-1



26496 - HL-1B



26496 - HL-2B



26499 - HL-2



26500 - HL-2



26496 - D



26496 - D



26499 - D



26500 - D





26501 - L



26501 - HL-1



26501 - HL-2



26501 - D



26503 - L



26503 - HL-1



26503 - HL-2



26503 - D



26504 - L



26504 - HL-1



26504 - HL-2



26504 - D



26506 - L



26506 - HL-1



26506 - HL-2



26506 - D



26505 · L ®



26505 · L ®



26243 · L



26446 · L



26505 · HL-1A ®



26505 · HL-1C ®



26243 · HL-1



26446 · HL1



26505 · HL-1B ®



26505 · HL-1D ®



26243 · HL-2



26446 · HL2



26505 · D ®



26505 · D ®



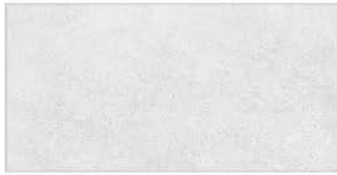
26243 · D



| Matt Hi-Depth

It is not just colors and patterns of tiles that are getting more diverse, manufacturers are also playing around with the shapes. A delicate weave enriches the ceramic material creating unique and elegant surfaces. Add variation, color depth, and surface interest in any area by incorporating textured field tile.

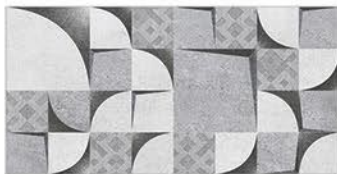
*Unique
and
elegant surfaces*



27001 - L



27001 - HL-1



27001 - HL-2



27001 - D



27002 - L



27002 - HL-1



27002 - HL-2



27002 - D



27003 - L



27003 - HL-1



27003 - HL-2



27003 - D



27004 - L



27004 - HL-1



27004 - HL-2



27004 - D



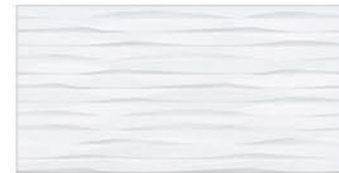
27005 - L



27005 - HL-1



27005 - D



27005 - L



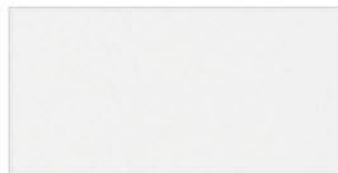
27005 - HL-2A



27005 - HL-2B



27005 - D



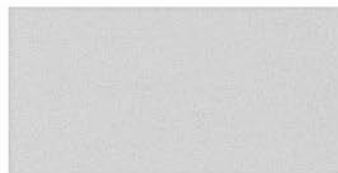
27006 · L



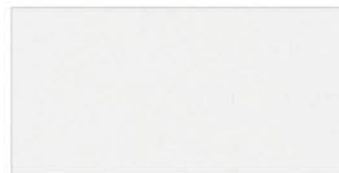
27006 · HL-1



27006 · HL-2



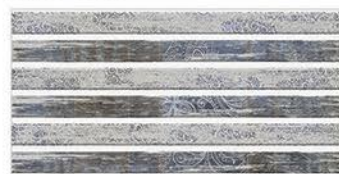
27006 · D



27006 · L



27006 · HL-3



27006 · HL-4



27006 · D



27007 · WHITE



27007 · HL-1



27007 · HL-2



27007 · HL-3



26201 - L ®



26201 - D ®



26201 - HL-1 POSTER

(8 Pcs.)



26225 - L



26225 - D



26225 - HL-3



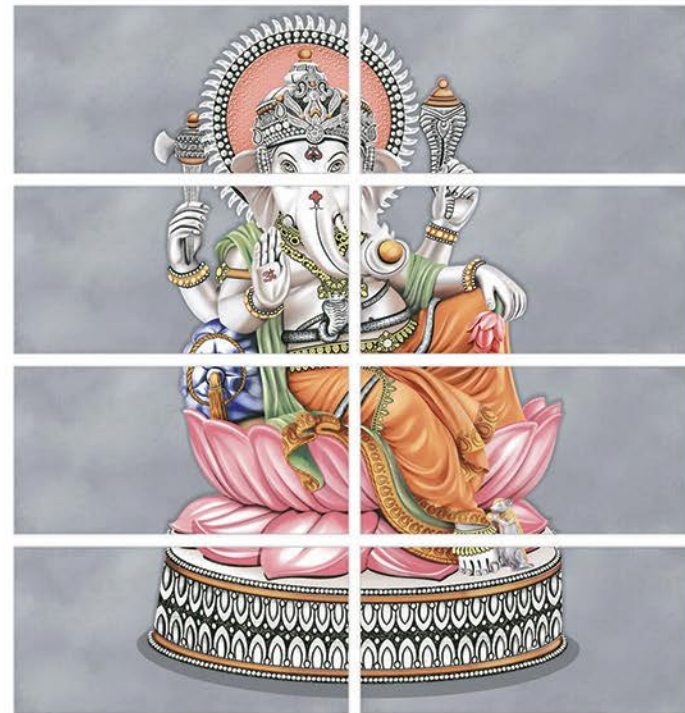
26225 - HL-4



26225 - HL-5



26225 - HL-6



26225 - HL POSTER

(8 Pcs.)



26225 - HL-17 POSTER

(4 Pcs.)



26445 - L ®



26445 - D ®



26445 - HL-2



26445 - HL-1 POSTER

(4 Pcs.)



26490 - L ©



26490 - HL-1 POSTER (4 Pcs.)



26490 - HL-2 POSTER (4 Pcs.)



26434 - HL-5 POSTER (4 Pcs.)



26250 - HL-1



26250 - L ©



26250 - HL-2A ©



26250 - D ©



26250 - HL-2B ©



26250 - HL-3 POSTER (8 Pcs.)



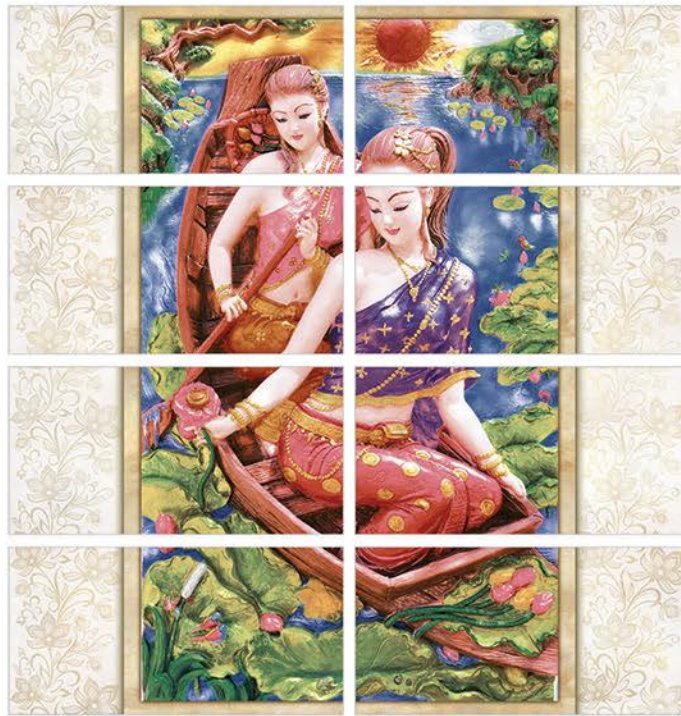
26426 - L ®



26426 - HL-1



26426 - D ®



26426 - HL-2 POSTER (8 Pcs.)



26435 - L ®



26435 - D ®



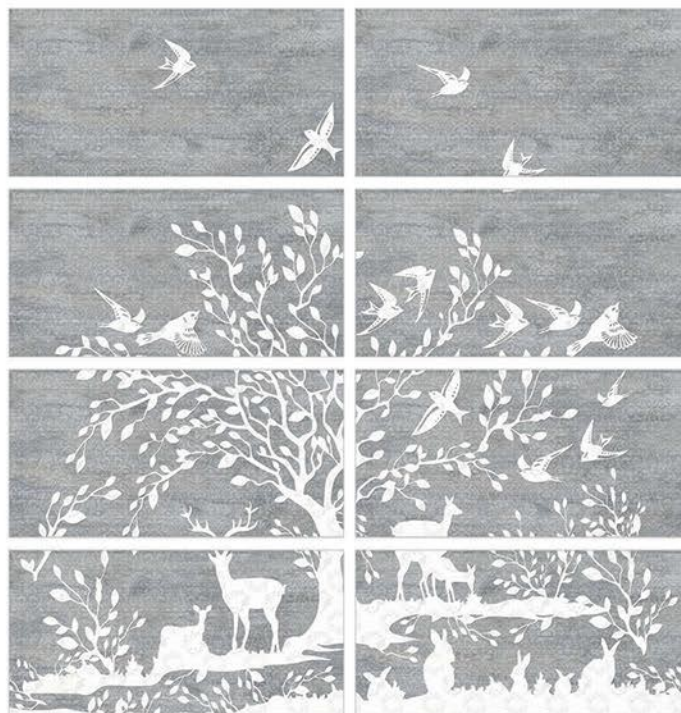
26435 - HL-4 POSTER (4 Pcs.)



26202 - L



26202 - D



26202 - HL-1 POSTER (8 Pcs.)



26437 - L



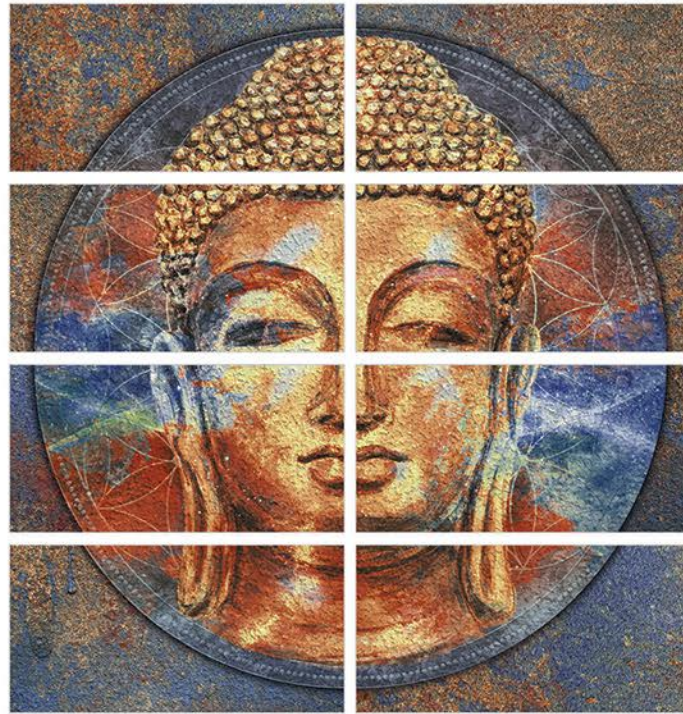
26437 - HL-1



26437 - D

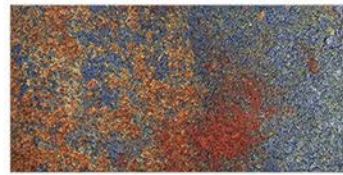


26437 - HL-2 POSTER (4 Pcs.)

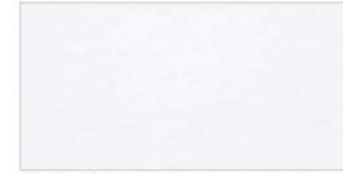


26275 - HL-1 POSTER

(8 Pcs.)



26275 - D



26443 - L



26443 - HL2



26443 - D



26443 - HL-1 POSTER

(2 Pcs.)



26234 - L

®



26234 - HL-1



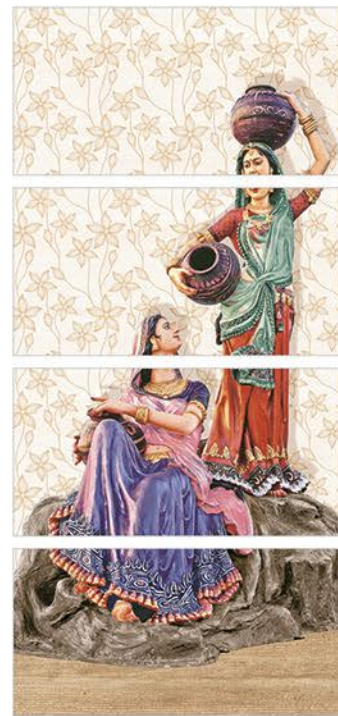
26234 - D

®



26234 - HL-2 POSTER

(4 Pcs.)



26234 - HL-3 POSTER

(4 Pcs.)



26439 - L

®



26439 - D

®



26439 - HL-1



26439 - HL-2 POSTER



(4 Pcs.)





Sairam

Architectural

blending with modern

trend

| Hi-Dipth Elevation

Natural stones remind us of timeless beauty, grace and add a royal touch to our exterior walls. Spaces responds to an ever-growing need for natural materials to create a backdrop for new exterior design solutions with a balanced, harmonious feel. Featuring a striking surface, enhanced by a lightweight body that accentuates its natural aesthetics and ideal for outdoor areas.





G-1



G-2



G-3



G-4



G-5



G-6



G-7



G-9





G - 8



G - 10



G - 11



PEBBLE - 12



PEBBLE - 13



PEBBLE - 14



PEBBLE - 15



PEBBLE - 16



PEBBLE - 17



PEBBLE - 18



PEBBLE - 19



PEBBLE - 20



PEBBLE - 21



PEBBLE - 22



PEBBLE - 23





PEBBLE - 24



PEBBLE - 25



PEBBLE - 26



PEBBLE - 27



PEBBLE - 28



PEBBLE - 29



RME - 1



RME - 2



RME - 3



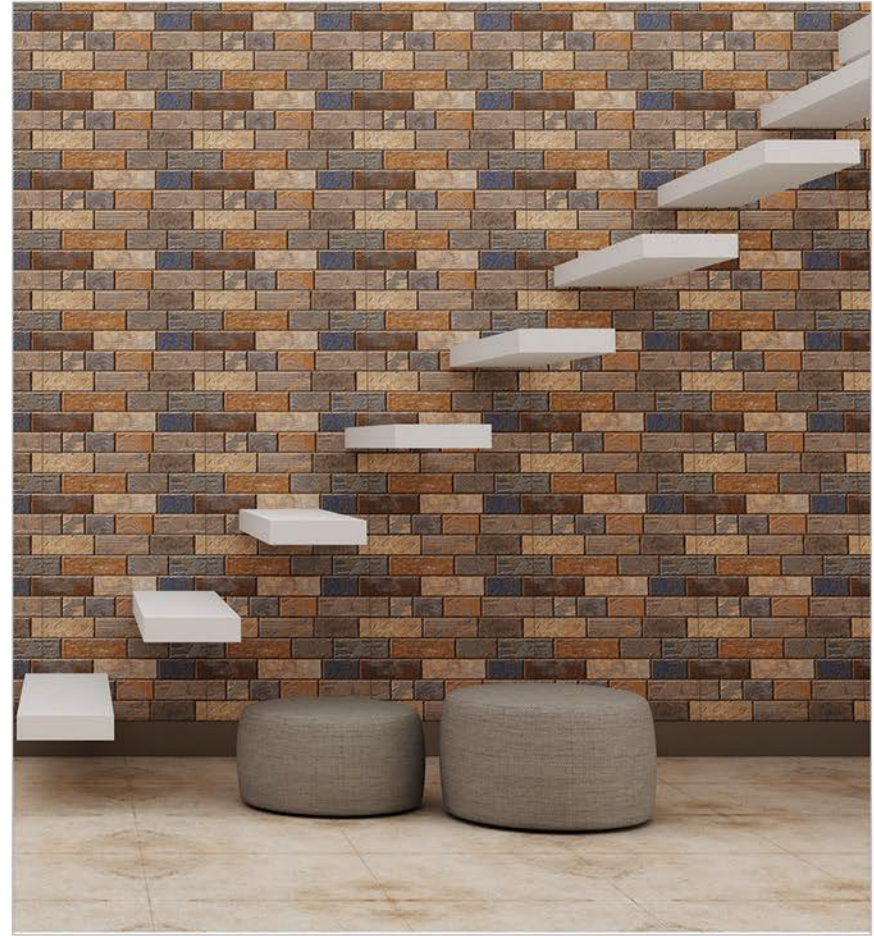
RME - 4



RME - 5



RME - 6



RME - 7



RME - 9



RME - 10



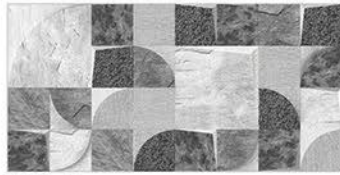
RME - 11



RME - 12



RME - 13



RME - 14



RME - 16



RME - 17



RME - 18



RME - 21



RME - 22



RME - 23



RME - 25



RME - 26



RME - 28



RME - 29



RME - 30



RME - 31



RME - 32



RME - 33



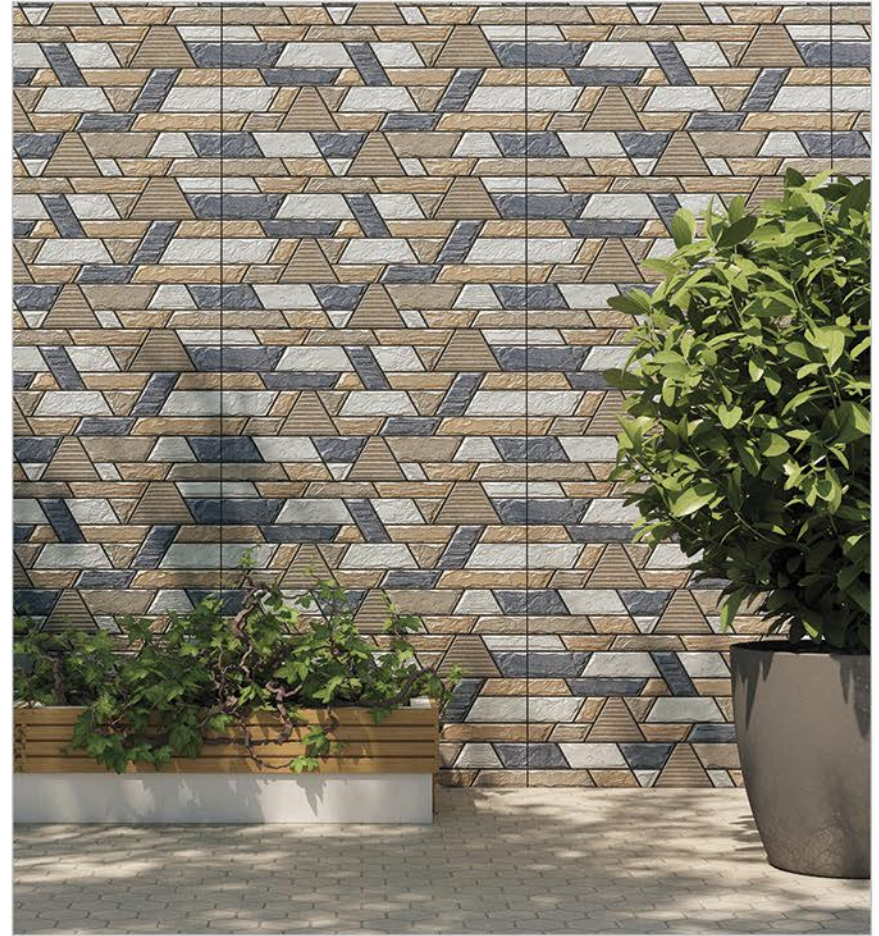
RME - 34



RME - 35



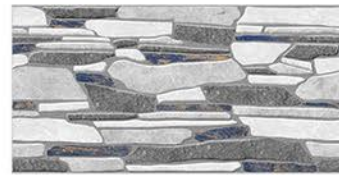
RME - 37



RME - 36



RME - 38



RME - 39



RME - 40



RME - 41

®



RME - 42

®



RME - 43 ®



RME - 44 ®



RME - 45 ®



RME - 46 ®



RME - 47 ®



RME - 48 ®



RME - 49



RME - 50



RME - 51



RME - 52



RME - 53



RME - 54





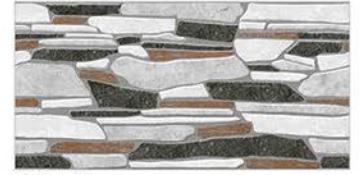
RME - 55



RME - 56



RME - 65



RME - 66



RME - 67



RME - 68



RME - 69



RME - 70



RME - 71

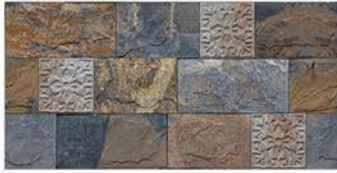


RME - 72



RME - 73





RME - 5001 ®



RME - 5002



RME - 5003



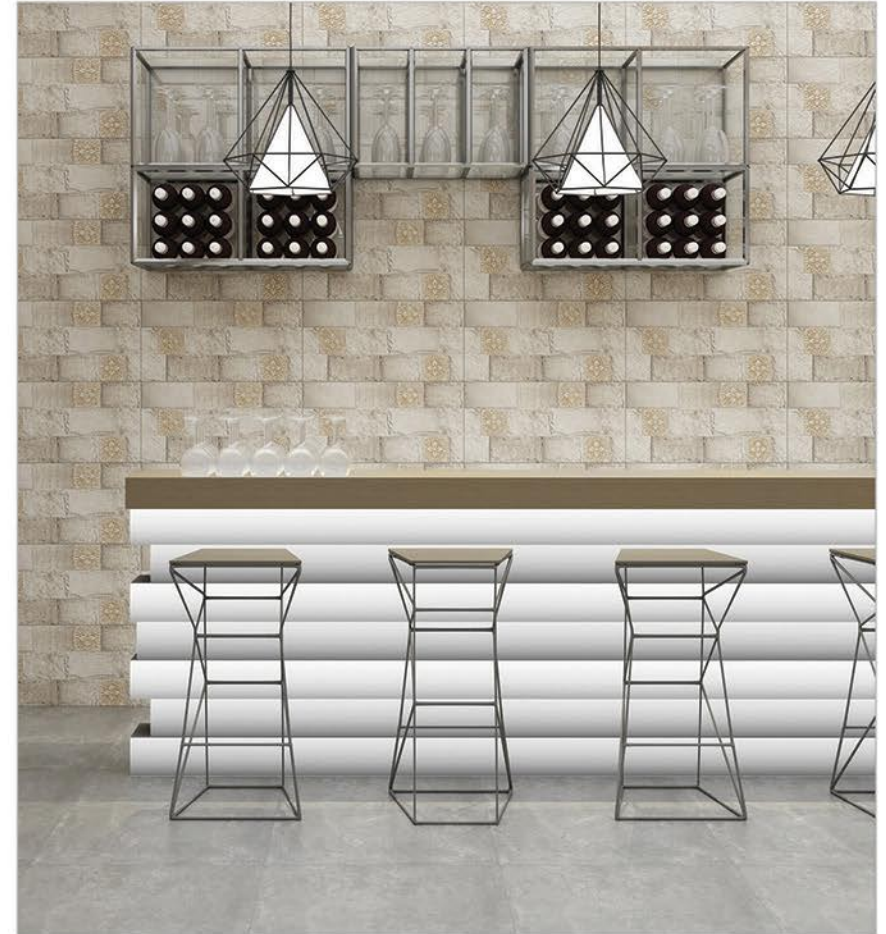
RME - 5004



RME - 5005



RME - 5006



RME - 5007



RME - 5008



RME - 5009



RME - 5010



RME - 5011



RME - 5012 ®



RME - 5013



RME - 5015-L



RME - 5014



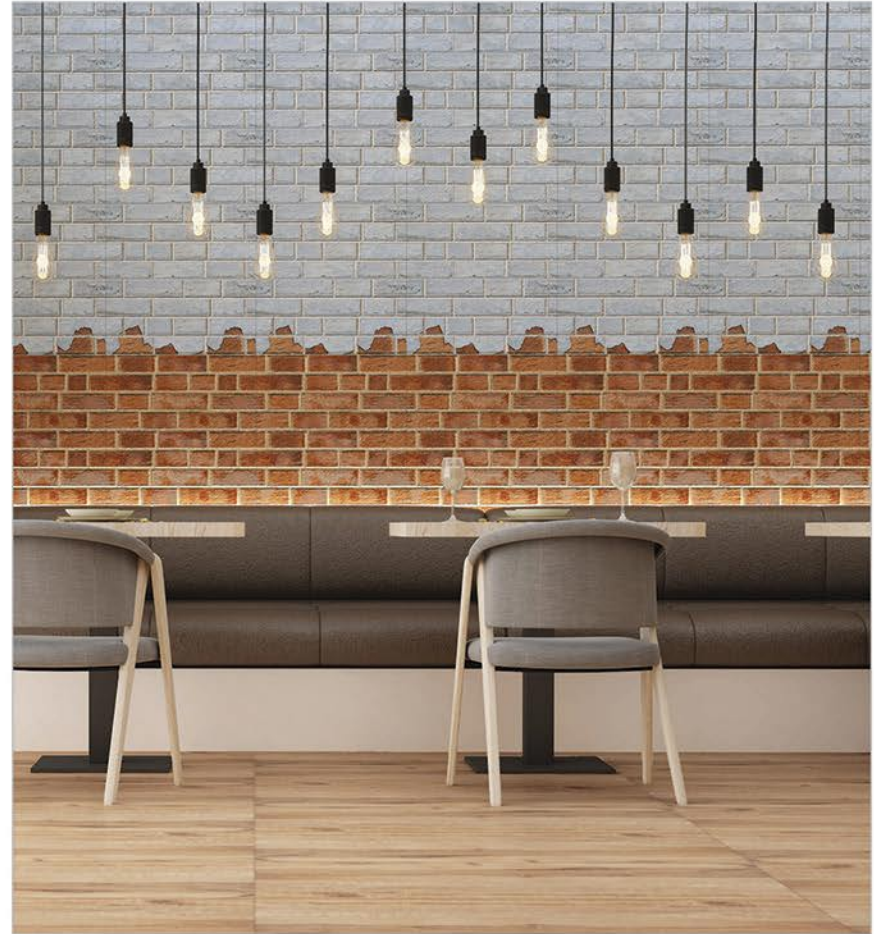
RME - 5015-HL



RME - 5016



RME - 5015-D



RME - 5017



RME - 5018



RME - 5019



RME - 5020



RME - 5021



RME - 5022



RME - 5023



RME - 5024



RME - 5025



RME - 5026



RME - 5027



RME - 5028



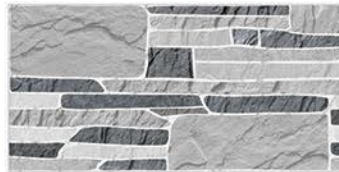
RME - 5029



RME - 5030



RME - 5031



RME - 5032



RME - 5033



RME - 5034





RME - 5035



RME - 5036 ®



RME - 5037



RME - 5038



RME - 5039 ®



RME - 5040 ®



RME - 5041 ®



RME - 5042 ®



RME - 5043 ®

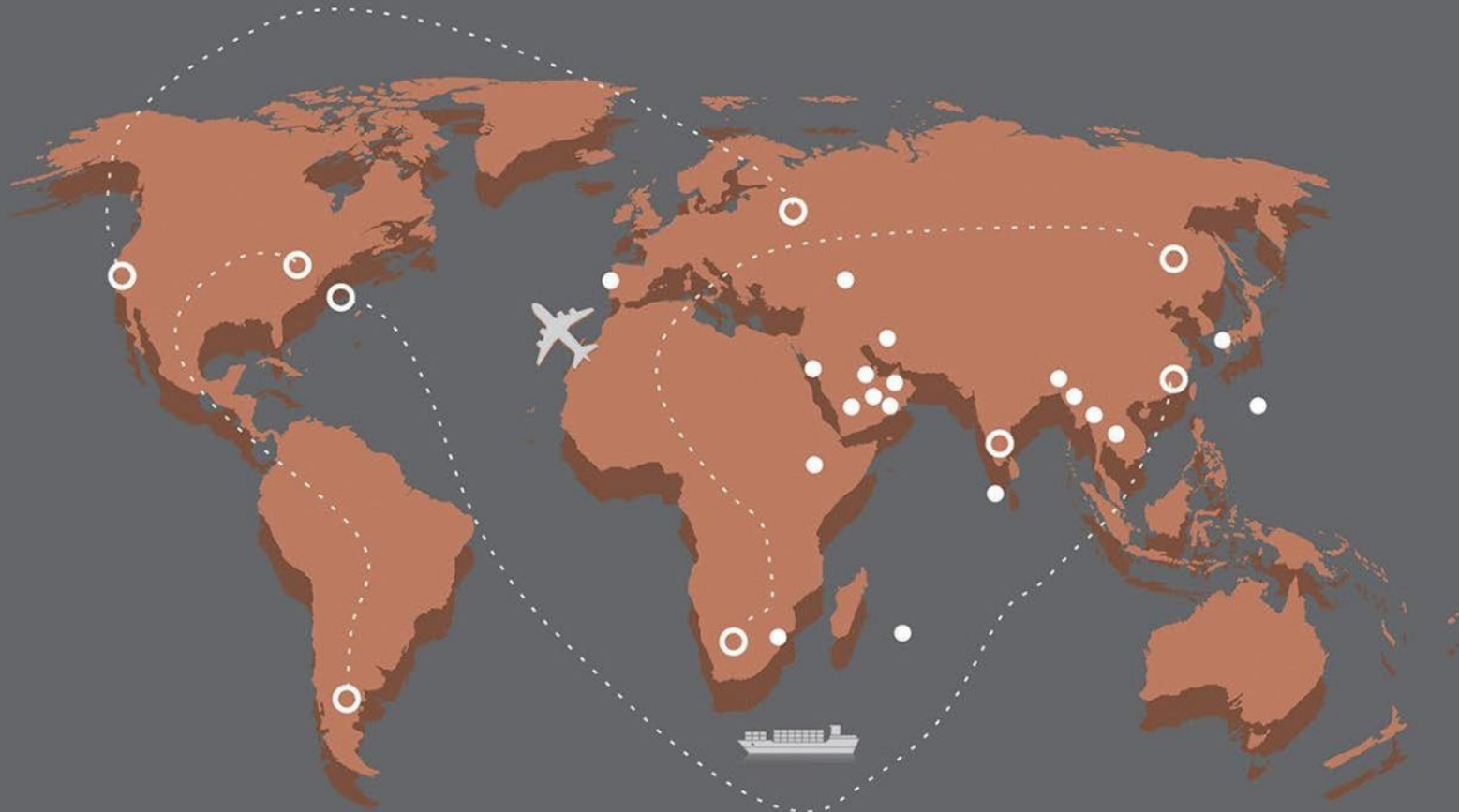


RME - 5044 ®





Exports



- Spain
- Philippines
- Russia
- Qatar
- UAE
- Sri Lanka
- Thailand
- Vietnam
- Jordan
- Saudi Arabia
- Uzbekistan
- Oman
- Nepal
- Bangladesh
- Kenya
- Yemen
- Mauritius
- Iraq
- Bahrain
- South-Africa
- Kuwait
- Korea

Worldwide
presence

FIXING WALL TILES 600x300mm



WALL REQUIREMENT

The wall should be strong and flat, surface be smooth, The wall should waxed/printed. Wall should be clean and dry. If the tiling has to be done on plywood the surface of wall should sealed with 50% volume mixture of PVA and water.



TILES PREPARATION

Mix the tiles from different cartoon which will help in fine blending of shades.



TILES LAYING

Firstly, apply the high quality ceramic adhesive on the wall and place first tile on the corner. Apply even pressure on the four corner of the tile to ensure striking. Fill the area of wall that can be filled with the tile without cutting and leave it for at least 12 hours. fill the rest of area with the measure and cut tiles.



TAMPING PROCESS

To insure the proper contact of tiles with the wall, Every temp the tiles with a rubber mallet tamp



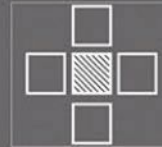
APPLYING GROUT

On the next day, the grouting is done. Apply the grout diagonally between tile using a sponge to fill the gaps between the tiles. Clean and the surplus grout with a sponge.



WINDOW RECESS TILING AND CUTTING

Tiles has to be cut in L Shape for window recess. Cut a line from center to edge and than draw a right angle line vertical down. Cut the line to get an L shape that can fit in a window



ACCESSARY TILE FITTING

While laying the normal tiles, Keep on the empty space where a accessory tile will be fit. Apply the adhesive on the back of accessory tiles and space if uniformly in the space and apply even pressure to place the accessory tile.



TILES DRILLING

Apply masking tape to cover the area to be drilling. Mark The position of hole and drill the hole with lowest possible pressure on the drill.



CORVE CUTTING

To fit the tiles in a curved surface of washbasin etc. Measure and mark the curve in cardboard and place the cardboard on the to cut it.



Hole Cutting

To pass the pipe through the tiles, the tiles to be cut in a specific manner. Mark the position on the file, which the tile. Which the tile will occupy. Draw a straight line passing through the center of the circle, cut the tile on the drawn. Cut the semi circle on each of the half and when the setwo halves placed together will form a hole

Technical specification

CHARACTERISTICS	EURO STANDARDS EN-159 / IS 13753	OUR VALUE
DIMENSION & SURFACE QUALITY		
Dimension & Surface Quality	0.5%	0.4%
Deviation In Thickness	0.6 mm	0.5mm
Straightness Of Sides	0.3%	0.2%
Rectangularity	0.5%	0.3%
Surface Flatness	05%	0.5%
Surface Quality	Min 95%	Min. 96%
PHYSICAL PROPERTIES		
Water Absorption	> 10%	12-18%
Bending Strength	> 150Kg/Cm ²	150 -180Kg/Cm ²
Scratch Hardness (moh's scale)	Min 3 (Mohs)	Min 3
Crazing Resistance	1 Cycle	No Crazing Up to 4 Cycles
Relevant Group	B III	B III
Type Of Tiles		Dust Press Wall Tiles
CHEMICAL PROPERTIES		
Staining Resistance	Min Class 2	Resistance To all Acids and Alkalies & Household Chemicals, except Hydro Flouric Acid
Household Chemical	Min Class B	
THERAMAL PROPERTIES		
Thermal Shock Resistance	Resistant 10 Cycles	Conforms
Thermal Expansion	9x10 ⁻⁶ max	Conforms

Packing Details			
Normal Size	600x300 mm Corrugated - Therocol		300x300 mm Floor
Thickness in mm	9.5 mm	9.5 mm	8.5 mm
Tiles Per Box (Pcs.)	5	8	9
Area Coverage Per Box (Sq. Mtr.)	0.90	1.44	0.81
Area Weight Per Box (kg.) Approx	14.5 Kg	23 Kg	11.5 kg

Utility of wall tiles



Note : Certain amount of size and shade variation is inherent in all ceramic products. Our conformity to the above fast is applicable only for quality. Colour shown are as accurate as the limitations of the printing process will allow. Prospective customers are advised to inspect a sample of the tile before ordering. Every effort has been made to ensure the accuracy of the information given. However the company reserve the right to change the specification without prior notice. Sometimes variations in shade or size being inherent to ceramic industry may occur. It is suggest to check the tiles before purchase any laying as the company does not accept responsibility once the tiles are laid.

ALL DESIGNS FLOOR ARE AVAILABLE IN 300X300MM SIZE AND FLOOR IS MATCHING OF DESIGN AND SAME AS DARK



SAIRAM CERA INTERNATIONAL LLP

ADDRESS : c-38, ceramic plaza 1, near vishal furniture, 8A national highway, Morbi 363642.

EMAIL : info@sairamcera.com

WEB : www.sairamcera.com

CALL : +919979868641 , + 919904555502